

## Installation Guide

# acsysteme **interval**toolbox version 1.2

## Table of contents

<b>1.</b>	<b>Limitation of liability</b> .....	<b>3</b>
<b>2.</b>	<b>Acsystème Interval Toolbox free trial version</b> .....	<b>4</b>
2.1	<i>Download and installation</i> .....	4
2.2	<i>Using the free trial version</i> .....	5
<b>3.</b>	<b>Acsystème Interval Toolbox commercial version</b> .....	<b>6</b>
3.1	<i>Installation</i> .....	6
3.2	<i>Using the toolbox</i> .....	7

## 1. Limitation of liability

**THE PROGRAMS SHOULD NOT BE RELIED ON AS THE SOLE BASIS TO SOLVE A PROBLEM WHOSE INCORRECT SOLUTION COULD RESULT IN INJURY TO PERSON OR PROPERTY. IF A PROGRAM IS EMPLOYED IN SUCH A MANNER, IT IS AT THE LICENCEE'S OWN RISK AND ACSYSTEME EXPLICITLY DISCLAIMS ALL LIABILITY FOR SUCH MISUSE TO THE EXTENT ALLOWED BY LAW.**

**ACSYSTEME SHALL HAVE NO LIABILITY FOR ANY INDIRECT CONSEQUENTIAL LOSS (WHETHER FORESEEABLE OR OTHERWISE AND INCLUDING LOSS OF PROFITS, LOSS OF BUSINESS, LOSS OF OPPORTUNITY, AND LOSS OF USE OF ANY COMPUTER HARDWARE OR SOFTWARE).**

## 2. Acsystème Interval Toolbox free trial version

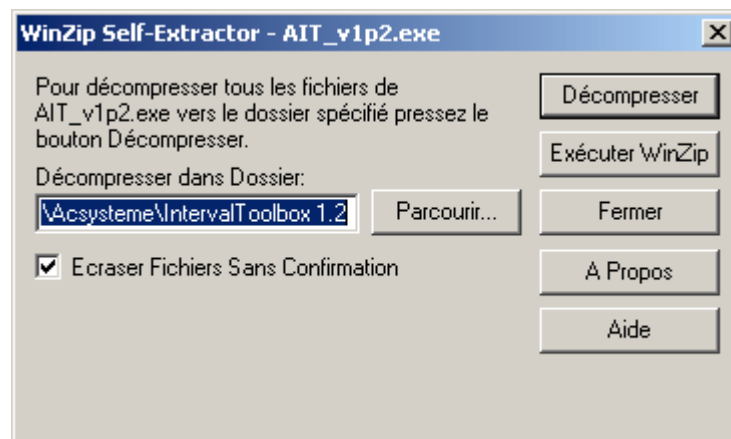
### 2.1 Download and installation

You can download a free trial version from the following URL:

<http://www.acsysteme.com>

The installation needs a password. You can register for free in order to get it on the same URL.

Double-click on the file you have downloaded (it should be: AIT\_v1p2.exe). It is a self-extractible file, so a window should appear:



**Note** <INSTALLDIR> the installation directory you have chosen for Acsystème Interval Toolbox (by default, this directory is set to: "C:\Program Files\Acsysteme\IntervalToolbox 1.2").

Then, press the "Décompresser" or "Unzip" Button.



Type the password. To obtain the password, you must register for free on Acsystème web site (<http://www.acsysteme.com>).

The installation is complete.

## 2.2 Using the free trial version

To use Acsystème Interval Toolbox:

- 1) launch Matlab
- 2) go to the <INSTALLDIR> directory
- 3) launch `startup.m`

You can create a shortcut for Matlab on your desktop that does the job for you.

```
*****  
***          ACSYSTEME INTERVAL TOOLBOX          ***  
***                      version 1.2              ***  
***                      www.acsysteme.com         ***  
*****  
See the User Guide for Tutorial  
For demos, type: demoait;
```

Type `demoait` for a demo of the capability of Acsysteme Interval Toolbox.

Edit `demoait` to view the source code of demos.

## 3. Acsystème Interval Toolbox commercial version

### 3.1 Installation

You should have received a printed mail, a printed license agreement and a CD containing the following files:

AcrobatReader.exe (PDF visualization program)

AIT\_licence.pdf (license agreement)

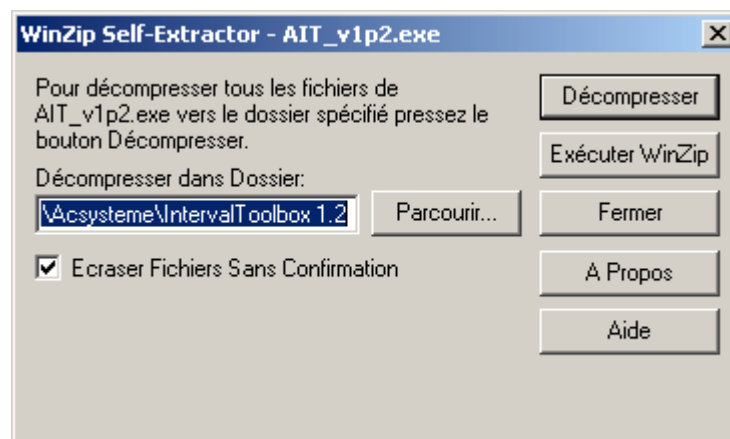
AIT\_install\_guide\_v1p2.pdf (this manual)

AIT\_user\_guide\_v1p1a.pdf (user's guide)

AITfull\_v1p1.exe (compressed file)

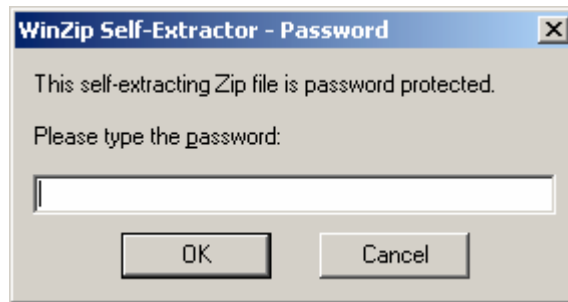
Be sure to read carefully all the terms and conditions of your license agreement before installing Acsystème Interval Toolbox. By installing the software, you accept the terms of the agreement.

To install Acsystème Interval Toolbox, launch the auto-extractible compressed file AITfull\_v1p2.exe. The following window should appear:



“C:\Program Files\Acsysteme\IntervalToolbox 1.2” is the default installation directory. You can change this setting if you want to install the toolbox in another location.

Then, press the “Décompresser” or “Unzip” Button. The following dialog box will prompt for the password that you should have received with the CD.



Before using the toolbox, you must first set the Matlab path so that it includes Acsystème Interval Toolbox's directories.

To do this, launch Matlab.

In the "File" menu, click on the "Set Path..." command. The Set Path dialog box should then appear.

Click the "Add with Subfolders" button. The "Browse for Folder" dialog box should open. Use then the view of your file system to select the directory to add. For example, if you chose the default location, you should select the following directory: "C:\Program Files\Acsysteme\IntervalToolbox 1.2".

The selected directory and subdirectories are added to the front (top) of the search path. Click the "Save" button so that the path changes are kept in effect for subsequent Matlab sessions.

## 3.2 Using the toolbox

In Matlab command window, type `demoait` for a demo of the capability of Acsystème Interval Toolbox.

Edit the file `demoait.m` to view the source code of demos.